

Technical Datasheet

Discharge Nozzles

Multiple Part Numbers NF25*****

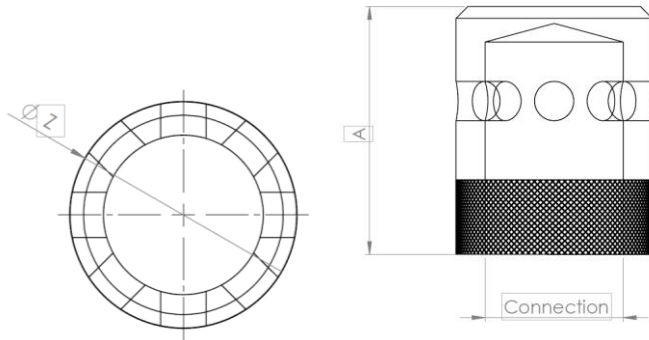
FSL 1230™



Discharge Nozzles 180 & 360 Degree • FSL Chemical gas systems

designed for use with

Clean Agent Chemical Gaseous Suppression Systems



Chemical Nozzle dimensions



Chemical Nozzle 360 & 180

360°/180° nozzle technical specifications

Dimension	Length, mm					
	1/2" DN15	3/4" DN20	1" DN25	1 1/4" DN32	1 1/2" DN40	2" DN50
A	34	41	51	63	71	103
ZØ	24	32	40	50	60*	75*
Connection	1/2" BSP	3/4" BSP	1" BSP	1 1/4" BSP	1 1/2" BSP	2" BSP
Part Number 180°	NF 251521	NF 252021	NF 252521	NF 253221	NF 254021	NF 255021
Part Number 360°	NF 251522	NF 252022	NF 252522	NF 253222	NF 254022	NF 255022
Connection	1/2" NPT	3/4" NPT	1" NPT	1 1/4" NPT	1 1/2" NPT	2" NPT
Part Number 180°	NF 251521N	NF 252021N	NF 252521N	NF 253221N	NF 254021N	NF 255021N
Part Number 360°	NF 251522N	NF 252022N	NF 252522N	NF 253222N	NF 254022N	NF 255022N

Material: Brass (Nickel Plating available on special order)

Identification: Part number on the nozzle body & orifice sizes are stamped on bottom face of the nozzle.

Suitable for indoor applications.

Must be fitted using PTFE tape.

Visually check every 6 months for blockages, damages or corrosion.